

PERSONAL NAVIGATOR

Sunrise: 6:51 a.m. Sunset: 6:00 p.m.

Evening Attire: Cruise Casual

All Ashore: 9:45 a.m.

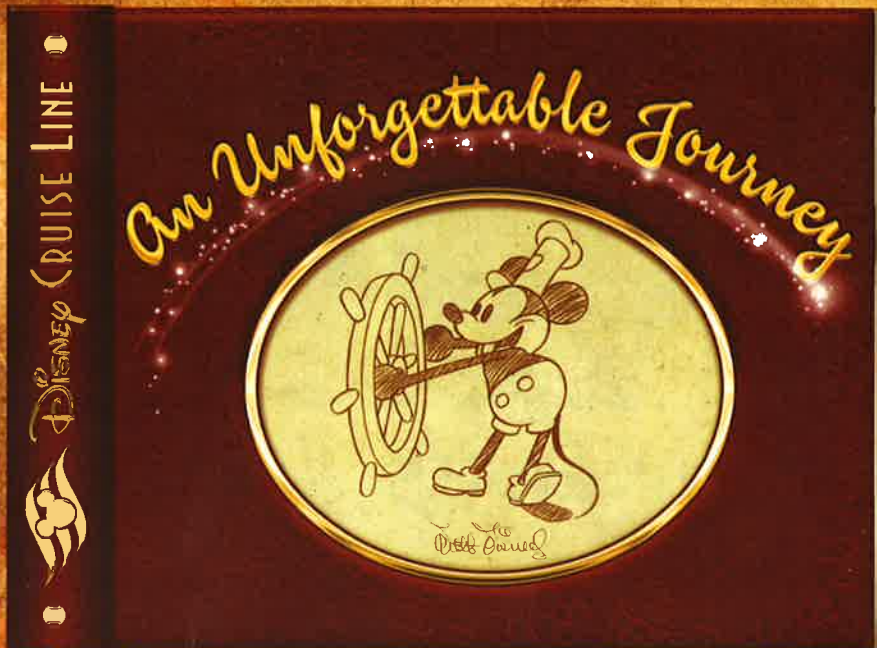
All Aboard: 4:30 p.m.

Friday: Partly Cloudy High: 73°F/23°C

Saturday: Partly Cloudy High: 68°F/20°C

FRIDAY, FEBRUARY 8, 2013

CASTAWAY CAY



Join us tonight as we celebrate our magical voyage, inspired by the words and wisdom of the man himself, Walt Disney; featuring the Walt Disney Theatre cast, World Famous Disney Characters and the Comedy and Magic of David Williamson.

WALT DISNEY THEATRE
Deck 3 & 4, Forward
6:15 p.m. & 8:30 p.m.



Assistance available at the entrance to the Walt Disney Theatre 30 minutes prior to show time.

Disney's Castaway Cay

Reserved exclusively for Guests on Disney Cruise Line Bahamian and Caribbean cruise vacations, Castaway Cay is Disney's private port-of-call paradise. On this island, enjoy tropical leisure activities, such as snorkeling, boating, swimming and sunbathing.

Friendly Reminders

- You will need your Key To The World Card for all transactions on Disney's Castaway Cay except for the Post Office.
- For your convenience, beach towels are available as you leave the ship; please return them at the gangway at the end of your day.
- Serenity Bay is reserved for Guests 18 and older.
- A limited number of all-terrain wheelchairs across from Scuttle's Cove.
- Due to our commitment to the environment, we ask that seashells, coral and other natural treasures be left undisturbed at Disney's Castaway Cay for all to enjoy.

Debark Talk Broadcast

Your Cruise Director, Brent presents important information including details regarding U.S. Customs and Border Protection procedures. Tune in to Channel 5 of your stateroom TV.

Please place your luggage outside your stateroom between 8:30 - 10:30 p.m.

Thank you in advance for completing your comment card.

SEA YA' REAL SOON!

Mickey and Minnie, along with the rest of the Walt Disney Characters, invite you to join them in the ship's Atrium. You won't want to miss this very special farewell meet and greet.

Bring your cameras!
Lobby Atrium,
Deck 3, Midship,
4:30 & 10:15 p.m.

Don't Miss:

Ship's Whistle

Will be played at 5:00 p.m. today as we set sail from Castaway Cay
The Disney Fantasy's whistle, a prominent element of the "Sailing Away" deck party at the start of the cruise, is quite the musical talent. It's able to perform not just the first musical line of "When You Wish Upon a Star" but also the second line of the song ("makes no difference who you are") plus several measures of "Yo Ho (A Pirate's Life for Me)," "It's a Small World," "Be Our Guest," "Hi Diddle Dee Dee (An Actor's Life for Me)" and "A Dream is a Wish."

Crab Races

Island Gazebo 1, - 11:45 a.m.

Island Gazebo 2, - 12:30 p.m.

Watch some local sea creatures make a break for the finish line.

Family Cabaret: Ricky Kalmon

The Tube, Deck 4, Aft - 7:30 p.m.

Featuring the Comedy & Hypnosis of Ricky Kalmon, as he entertains the entire family in this fun-filled show.

Visit The Future Cruise Desk Early Today

Please visit the Future Cruise Desk, Deck 4, Midship, as early as possible today. The last day of the cruise tends to get busy in the evening, and we want to be sure you have the opportunity to save 10% on your next cruise, receive up to a \$200 onboard credit, and pay a reduced deposit! Tune to Channel 8 for details.



DINNER MENU

Animator's Palate: Sea Ya' Real Soon
Enchanted Garden: Sea Ya' Real Soon
Royal Court: Sea Ya' Real Soon

DRINK OF THE DAY

Stingray (Alcoholic)
Parrot Song (Non Alcoholic)

IMPORTANT NUMBERS

Fire/Security: 7-3001
Medical Emergency: 7-3000
Health Center: 7-1923

FUN FOR ALL AGES HIGHLIGHTS

RUNDISNEY: CASTAWAY CAY 5K (12+)

Meet in *The Tube* (Departs at 9:30 a.m.), Deck 4, Aft - 9:15 a.m.
Runners meet in *The Tube*, Deck 4, Aft, at 9:15 a.m. (12+)
We will depart the ship at 9:30 a.m., and make our way to the Bike Rentals where the run will begin.



WHALE DIG

Monstro Point - 1:00 p.m.

Make no bones about it, this is an adventure every beachcomber is sure to dig! Our island paleontologist leads us in the excavation of a giant whale skeleton and other fossilized treasures!

DISNEY VACATION CLUB GROUP PREVIEW

The Tube, Deck 4, Aft - 4:30 p.m.

Want to learn more about taking magical vacations year after year? Stop by our interactive group presentation to find out more information from a Disney Vacation Club representative.

PLAYHOUSE D LOUNGE

D Lounge, Deck 4, Midship - 5:00 p.m.

Calling our youngest of cruisers! Here is a special Playtime that is just for you. Come meet new friends and join in on the fun as your Cruise Staff team takes you through interactive activities made just for you!

FAMILY TALENT SHOW AND DISCO

D Lounge, Deck 4, Midship - 7:30 p.m.

Does your family have what it takes to make their performing dreams come true? Find out at the Disney Fantasy Family Talent Show - dare to show your family's flair!



D TUNES FAM JAM

D Lounge, Deck 4, Midship - 10:00 p.m.

Tune IN and rock with us at this new family dance party! Spread the word, there will be cool music, new dances, contests and a chance to win great prizes!



FAREWELL KARAOKE

D Lounge, Deck 4, Midship - 10:30 p.m.

Your final chance to take the stage, grab the mic and sing along to your favorite song.

ADULT ACTIVITY HIGHLIGHTS

SENSES SPA FITNESS CLASSES & SEMINARS



Sunrise Stretch - Senses Fitness Center - 7:00 a.m.

Fab Abs - Senses Fitness Center - 7:30 a.m. & 5:00 p.m.

Body Sculpt Boot Camp (Nom. Fee) - Senses Fitness Center - 8:00 a.m.

Yoga on the Beach - Serenity Bay - 11:00 a.m.

TASTING CLASSES

Beer Tasting (21+) - O'Gills Pub (Nom. Fee, Pre Book) - 4:30 p.m.

Please make reservations for tastings at Guest Services for a nominal fee.

Tasting Seminars are only for Guests 21 and older.

CLUB
18*21

CLUB 18*21 - BASKETBALL FREE THROW

In Da Shade Game Pavilion, - 1:00 p.m.

CLUB 18*21 - FAREWELL EVENT

O'Gills Pub, Deck 4, Aft - 10:00 p.m.

LIVE MUSIC WITH ROBERTO AND DARIA

La Piazza, Deck 4, Aft - 4:30 p.m., 9:45 p.m. & 10:45 p.m.

Join Roberto and Daria as they perform live in the stunning *La Piazza*.

LOVE SONGS WITH TIM ADSHEAD

La Piazza, Deck 4, Aft - 7:30 p.m.

Join Tim Adshead as he plays a collection of love songs.

LIVE PIANO WITH TIM ADSHEAD

La Piazza, Deck 4, Aft - 8:30 p.m.

Join Tim Adshead as he plays live piano for your listening pleasure.

MAJORITY RULES

The Tube, Deck 4, Aft - 10:15 p.m.

Join your Club Host, Tina, to find out who really rules.

GOIN' UNDERGROUND WITH DJ BRANDON

The Tube, Deck 4, Aft - 11:15 p.m.

Grab onto the handrails as we take you underground with DJ Brandon.



YOUTH ACTIVITY HIGHLIGHTS

DINE & PLAY

A convenience for families dining at 8:15 p.m., our Youth Activities Counselors will be available at 9:15 p.m. at the entrance of Royal Court, Enchanted Garden and Animator's Palate dining rooms to bring registered children to join the fun in the Youth Activity areas.



Deck 5, Midship (7-1440)
(3-12 years old) 4:30 p.m. - 12:00 mid

CRUISIN' WITH CRUSH

7:30 p.m.
Be sure to check out the Oceaneer Club to see Crush when he stops by!

GLOW JAM

9:45 p.m.
Receive your very own glow bracelet or necklace and join us for a glow-in-the-dark party with lots of games, fun and dancing for all.



Deck 5, Midship (7-1445)
(3-12 years old) 4:00 p.m. - 12:00 mid

ANYONE CAN COOK

7:15 p.m.
Anyone can cook as we work together to create some of our favorite treats.

SUPER SLOPPY SCIENCE - FLUBBER

8:15 p.m.
Join Professor Make-O-Mess in some of the most extreme experiments you will ever seen in the world of Super Sloppy Science!



Deck 13, Midship (7-9743)
(11-14 years old) 4:30 p.m. - 12:00 mid

DISNEY ANIMATION: PERSISTENCE OF VISION

6:00 p.m.
Go behind the scenes at Walt Disney Animation Studios and learn the principles that make animation work, and try your hand at creating your own easy animation demonstration in this fun and fascinating enrichment program.

HOW WELL DO YOU KNOW YOUR COUNSELOR?

10:15 p.m.
Do you think you know all there is to know about your counselors? Come test out your knowledge with all of your friends!



Entrance on Deck 4, Forward (7-9418)
(14-17 years old) 4:30 p.m. - 1:00 a.m.

CAPTURE THE FLAG

2:00 p.m.
This fast-paced field game teams kids up and challenges them to use strategy, speed, and skill. Which team will be most successful as they Capture The Flag of their opponent and win the game?

ZOMBIFIED PREMIER

10:15 p.m.
One time only! Come join us in the Buena Vista Theatre for this exclusive big screen premiere of "Zombified," a film featuring the Teens of Vibe as the cast!

BUENA VISTA THEATRE

Today's Movies

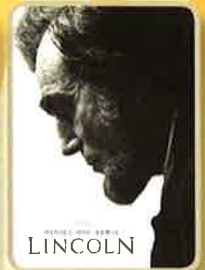
OC - Open Captioning



8:30 a.m.
Run Time: 1 hr 53 min
Rating: PG



12:15 p.m.
Run Time: 1 hr 41 min
Rating: PG



2:30 p.m.
Run Time: 2 hr 30 min
Rating: PG-13



5:45 p.m. & 8:15 p.m.
Run Time: 1 hr 40 min
Rating: G



11:00 p.m.
Run Time: 2 hr 22 min
Rating: PG-13



Star of the Disney Channel Show SNAP, Ricky Kalmon brings you his Comedy and Hypnosis where the audience becomes the stars!

FAMILY CABARET

The Tube,
Deck 4, Aft,
7:30 p.m.

ADULT CABARET

The Tube (18+),
Deck 4, Aft,
10:45 p.m.

YOUTH ACTIVITIES OPEN HOUSE

Open House is an opportunity for all to come and participate in a variety of exciting activities and free time in the Oceaneer Club, Lab and Edge throughout the cruise. During these times secured programming will still be offered in the other venue for those looking to check their children into care.

Disney's Oceaneer Lab: 9:00 a.m. - 12:00 p.m.
Disney's Oceaneer Club: 12:00 p.m. - 4:00 p.m.

MORE TO ENJOY WHILE ONBOARD

THE MUPPETS

There's a Muppet mystery onboard, and Kermit and Pepe need YOU to solve it! Search the ship for clues and use our special detective "badge" to catch the culprit!



Decks 2 & 5, Midship,
9:00 a.m. - 10:00 p.m.



SENSES
SPA & SALON

RECOVERY PACKAGE

- 20 minute Back, Neck and Shoulder Massage
- 20 minute Scalp Massage
- 20 minute Foot & Ankle Massage

60 minutes total \$99

VISTA GALLERY

Your last opportunity to purchase your Disney art. Shipping available. Stop by the Vista Gallery, Deck 4, Midship, to find out more.

6:00 p.m. - 10:00 p.m.



Shutters

GET THE PICTURE

This is your last chance to purchase your photo CD and prints. Order all your stateroom photos on a CD for \$349.95 and we will include all the prints for ONLY \$50 extra! All your photos will be available in your stateroom folder and you can view it on our interactive photo kiosks in Shutters Digital on Deck, 4, Midship. Visit Shutters to learn more. Conditions apply *

*Please note that photos are available for viewing on our interactive photo kiosks approximately five hours after being taken and are only available for purchase during this cruise.

Disney Cruise Line
PORT ADVENTURES

Welcome to Disney's Island Paradise Castaway Cay. Today is the day to relax in an inner tube, snorkel in the Caribbean blue, get up-close and personal to real life stingrays or fly high in the sky on a parasail excursion during a breathtaking aerial adventure. Visit Marge's Barges or one of the rental locations and our friendly team will assist in making any last minute bookings.

PORT ADVENTURES MEETING TIMES AND LOCATIONS

As per ticket	Castaway Ray's Stingray Adventure	Stingray Hut
As per ticket	Castaway Cay Bottom Fishing	Marge's Barges
As per ticket	Glass Bottom Boat	Marge's Barges
As per ticket	Nature Walk and Kayaking	As per ticket
As per ticket	Parasailing	Marge's Barges
As per ticket	Seahorse Catamaran Snorkel Adventure	Marge's Barges
9:30 a.m.	Teen Wild Side	Vibe
As per ticket	Watercraft Ski Adventure	Boat Beach

CASTAWAY CAY ISLAND RENTALS

Bicycles	9:30 a.m. - 4:00 p.m.	Near Cookies Too / Windsock
Boats	9:30 a.m. - 4:00 p.m.	Boat Beach
Snorkeling Gear	9:30 a.m. - 3:30 p.m.	Gil's Fins and Boats / Flippers and Floats
Float	9:30 a.m. - 3:30 p.m.	Gil's Fins and Boats / Flippers and Floats
Getaway Package	9:30 a.m. - 3:30 p.m.	Gil's Fins and Boats / Flippers and Floats

Reservations can be made on the island at each rental location. Castaway Ray's walk up reservations can be made at Gil's Fins and Boats on Family Beach.

SHOPPING

LAST OPPORTUNITY

This is your last chance to get your hands on our fantastic collection of Sophia Fiori diamond jewelry! Drop in to White Caps. These exquisite diamonds are not available back home so take advantage of these Trunk Show specials and do not miss out!

SHOPPING IN PARADISE

Disney's Castaway Cay has two shopping locations with Disney's Castaway Cay merchandise. This is your chance to take home a memory of our private island!

GREAT OFFERS ONBOARD!

Get a Disney Cruise Line ship plush for \$24.95 when you spend \$25 or more and a Disney Cruise Line watch for \$14.95 when you spend \$30 or more. Promotion available in Mickey's Mainsail, Sea Treasures, and White Caps. Shops are located Deck 3, Forward.

SPECIAL VALUE

Stop by Mickey's Mainsail, Deck 3, Forward, to view our selection of special value Disney Cruise Line merchandise. Items available include Disney Cruise Line ceramic mugs, t-shirts, tote bags, and much more!

FANTASY LOGO

Bring home a memory of your first sailing on the Disney Fantasy. Choose from t-shirts, hats, sweatshirts, mugs, and scrapbooks. Deck 3, Forward.

DISNEY FANTASY AND CHARACTER JEWELRY

Choose from *Disney Cruise Line*®, Castaway Cay, and Mickey Mouse necklaces and earrings. Available in White Caps, Deck 3, Forward.

Due to port regulations, when the ship is docked, the stores will remain closed.

IMPORTANT INFORMATION

Security Notice

All Guests (including children) who wish to disembark the ship are required to present their Key to the World card at the gangway. A photo ID is also required for those Guests who are 18 years of age or older. Guests under the age of 18 are required to have a Parent, Guardian or other responsible adult sign an authorization form at the time it is given out if they wish to go ashore unaccompanied. Authorization forms are available at the gangways and Guest Services.

Please Note:

Please remember to use plenty of sunscreen and mosquito repellent when venturing ashore.

Cold and Flu Reminder

Please wash hands frequently and thoroughly, particularly before meals. Contact the Health Center by dialing 7-1923, should anyone in your party become ill.

Corridor Quiet Hours

As a courtesy to all our Guests, please recognize quiet hallway hours from 10:00 p.m. til 8:00 a.m.

Inclement Weather

For the safety of all Guests, outdoor events may be changed due to unforeseen weather conditions.

Environmental Message

With Disney's commitment to the Environment, please refrain from throwing anything over the Ship's side. Thank you!

No Reserved Seats Policy

As a courtesy to all our Guests, we kindly advise that the saving of seats is not permitted in the Walt Disney Theatre, and the saving of the sun loungers is not permitted on Deck 11, 12, and 13. Items left unattended will be returned to lost and found at Guest Services, Deck 3 Midship.

Smoking

For the comfort of our guests the following areas are designated as Smoking areas: - Promenade Deck (Deck 4), smoking is permitted Port Side. Aft only from 6:00 p.m. to 6:00 a.m.
- Currents - Deck 13, Forward, Port Side.
- Meridian Bar - Deck 12, Aft, Port Side, outside.
- Smoking is permitted on stateroom verandahs. Smoking is prohibited inside all guest staterooms. Guests found smoking in their staterooms will be charged a \$250 stateroom recovery fee.


Walt Disney Theatre



Theatrical performances may use artificial fog, strobe lights, pyrotechnics and other special effects. For the safety of our performers and the comfort of those around you, the use of any photography, video recording device or any electronic equipment is prohibited.

Verandah Safety

Please do not leave any combustible materials on your balcony when not present in your stateroom for safety reasons.

Morning	8:30	8:45	9:00	9:15	9:30	9:45	10:00	10:15	10:30	10:45	11:00	11:15	11:30	11:45	12:00	12:15	12:30	12:45	1:00	1:15	1:30							
FUNNEL VISION	Snow White (G) Funnel Vision						Mary Poppins (G) Funnel Vision																					
MOVIES	Wreck-It Ralph (PG) - Open Captioning Buena Vista Theatre												Brave (PG) Buena Vista Theatre															
CHARACTER	Cpt. Jack Marge's Barges			Pluto Rustmore		Chip & Dale Post Office		Minnie Scuttles		Donald Post Office		Mickey Rustmore		Chip & Dale Post Office		Minnie Rustmore		Minnie Gazebo 1										
FUN FOR ALL AGES	runDisney: Castaway Cay 5K (12+) Meet in The Tube (Departs at 9:30 a.m.)						Crab Races Gazebo 1						Live Guitar with Rob Thompson Island Gazebo 1															
	Island Power Walk Meet on the pier by the showers						Beach Volleyball Sports Beach						Crab Races Gazebo 2						Whale Dig Monstro Point									
	Open House Disney's Oceaneer Lab												Basketball Free Throw In Da Shade Game Pavilion															
ADULTS	Friends of Bill W. Outlook						Yoga on the Beach Serenity Bay						Club 18*21 - Basketball Free Throw In Da Shade Game Pavilion															
	Books and Magazines Available in Cove Cafe																											
VIBE 14-17 YEARS OLD	Meet for Teen Hideout						Beach Volleyball						Ping Pong						Sand Soccer									
EDGE 11-14 YEARS OLD	Meet At Marge's Barges						Meet At In Da Shade						Sand Soccer						Lunch at Cookies Too				Pelican Plunge					
SCUTTLES COVE	Sand Crafts						Water Relays						GAGA Ball						Build a Sand Castle				Youth Lunch		Sand Soccer		Caribbean Beach Party	
OCEANEER LAB 3-12 YEARS OLD	Open House																											
OCEANEER CLUB 3-12 YEARS OLD	Open House																											
OUT AND ABOUT																			Family Whale Dig Monstro Point									

Afternoon	1:45	2:00	2:15	2:30	2:45	3:00	3:15	3:30	3:45	4:00	4:15	4:30	4:45	5:00	5:15	5:30	5:45	6:00	6:15	6:30	6:45							
FUNNEL VISION	The Princess Diaries (G) Funnel Vision						Aladdin (G) Funnel Vision						The Little Mermaid (G) Funnel Vision															
MOVIES	Lincoln (PG-13) Buena Vista Theatre												Finding Nemo (PG) Buena Vista Theatre															
CHARACTER	Hook & Smee Gangway		Daisy Gangway		Stitch Gangway		Hook & Smee Gangway		Chip & Dale Gangway		Daisy Gangway		SEA VU REAL SOON!		Donald Dk 4, Mid		Dopey Preludes											
FUN FOR ALL AGES	Live Guitar with Rob Thompson Island Gazebo 1						Midship Detective Agency Deck 2 & 5, Midship						Disney Vacation Club Group Preview The Tube						Live Piano Lobby Atrium									
	Open House Disney's Oceaneer Club												Jewish Sabbath Outlook, Deck 14						 Walt Disney Theatre									
ADULTS	Books and Magazines Available in Cove Cafe												Beer Tasting O'Gills Pub (Mon. Fee-Free Book)						Fab Abs Senses Fitness Center									
													Live Music with Roberto and Daria La Piazza															
VIBE 14-17 YEARS OLD	Sand Soccer		Capture the Flag				Dream Now! Sea How! - Animal, Science and Environment						Chillin' in Vibe						Girls Chill									
EDGE 11-14 YEARS OLD	Pelican Plunge		Meet for Teen Hideout						Vibe Sun Deck Party						Catch & Push						T Shirt Design				Disney Animation: Persistence of Vision			
SCUTTLES COVE	Caribbean Beach Party				Bubble Mania																							
OCEANEER LAB 3-12 YEARS OLD	Open For Secured Activities												Youth Dinner						Parachute Games				Adventure Squad					
OCEANEER CLUB 3-12 YEARS OLD	Open House												Open For Secured Activities						Wii Challenge						Magic Playfloor			
OUT AND ABOUT	Family Whale Dig Monstro Pt																											

Evening	7:00	7:15	7:30	7:45	8:00	8:15	8:30	8:45	9:00	9:15	9:30	9:45	10:00	10:15	10:30	10:45	11:00	11:15	11:30	11:45	12:00			
FUNNEL VISION	Little Mermaid (G) Funnel Vision				Toy Story 3 (G) Funnel Vision								Race to Witch Mountain (PG) Funnel Vision											
MOVIES	Finding Nemo (PG) Buena Vista Theatre												The Avengers (PG-13) Buena Vista Theatre											
CHARACTER	Goofy Preludes		Minnie Dk 4, Mid		Mickey Dk 4, Mid		SEA VU REAL SOON!												Live Music with June Gypsies Lobby Atrium					
FUN FOR ALL AGES	Family Talent Show and Disco D Lounge				 Walt Disney Theatre				Live Music Lobby Atrium				Live Music with June Gypsies Lobby Atrium											
	Family Cabaret: Ricky Kalmon The Tube - Hypnosis								 D Lounge				Farewell Karaoke D Lounge											
ADULTS	Live Music with June Gypsies Lobby Atrium				Love Songs with Tim Adthead La Piazza				Live Piano with Tim Adthead La Piazza				Live Music with Roberto and Daria La Piazza				Adult Cabaret: Ricky Kalmon The Tube - Hypnosis				Goin' Underground The Tube			
	NBA Basketball O'Gills Pub (Subject to Satellite Availability)												Live Music O'Gills Pub				Majority Rules The Tube				Live Music with Roberto and Daria La Piazza			
VIBE 14-17 YEARS OLD	Create A Memory Book				Flubber				Smoothie Time				Zombified Premier				Mix and Match							
EDGE 11-14 YEARS OLD	Four Square		Gender Wars				Create A Memory Book				That's Hilarious				Know Your Counselor?				GAGA Ball		Dance Party			
OCEANEER LAB 3-12 YEARS OLD	Adventure Squad		Anyone Can Cook				Super Sloppy Science - Flubber				Create a Postcard				GAGA Ball				Magic Playfloor		Dance Party			
	Create A Mask				Magic Show												Pictionary							
OCEANEER CLUB 3-12 YEARS OLD	Create a Postcard				Parachute Games				Toy Story Boot Camp				Dance Party				Memory Wall							
	Cruisin' with Crush												Movie Time											
OUT AND ABOUT	Mini Golf Goofy Golf																							

Symbol for activities that will be repeated during the cruise

Youth Activities Open House

VOID

Fold along the dotted lines and make me with you so you don't miss any of the fun!

VOID

NO THE SPOTLIGHT SERIES
SOLVE IT! SERIES

JUMP UP! SERIES
CREATE & INVENT SERIES

SALESBASKET SERIES
STORYBOOK SERIES

FRIDAY, FEBRUARY 8, 2013 - CASTAWAY CAY

BUENA VISTA THEATRE

CC - Open Captioning

				
8:30 a.m. Run Time: 1 hr 53 min Rating: PG	12:15 p.m. Run Time: 1 hr 41 min Rating: PG	2:30 p.m. Run Time: 2 hr 30 min Rating: PG-13	5:45 & 8:15 p.m. Run Time: 1 hr 40 min Rating: G	11:00 p.m. Run Time: 2 hr 22 min Rating: PG-13

GOOFY'S SPORTS

Digital Stimulators

Sports Stimulator
(Basketball, Baseball, Football, Hockey)
\$25 / half hr, \$45 / hr
or Soccer) \$12 / half hr, \$20 / hr

Golf Stimulator
\$25 / half hr, \$45 / hr

Reservations can be made at the Port Adventures Desk, Deck 5, Mudskip or at the Stimulators, Deck 33, Aft.

Character Appearances

CAPTAIN JACK SPARROW
Marge's Barges - 9:30 a.m.
Pelican Point Tram Stop
10:45 a.m.
Post Office
9:30 a.m. & 10:30 a.m.
Deck 4, Balcony - 5:30 p.m.

DONALD DUCK
Post Office
9:30 a.m. & 10:30 a.m.
Deck 4, Balcony - 5:30 p.m.

PLUTO
Mr. Rustmore - 9:45 a.m.
Scuttle's Cove - 10:45 a.m.
Preludes - 8:00 p.m.

MICKEY MOUSE
Scuttle's Cove - 9:45 a.m.
Mr. Rustmore - 10:45 a.m.
Island Gazebo 1 - 12:15 p.m.
Deck 4, Balcony - 8:00 p.m.

CHIP & DALE
Post Office
10:00 a.m. & 11:00 a.m.
Gangway - 3:15 p.m.

STITCH
Gangway - 2:45 p.m.

GOOFY
Mr. Rustmore - 10:15 a.m.
Scuttle's Cove - 11:15 a.m.
Preludes - 7:15 p.m.

MINNIE MOUSE
Scuttle's Cove - 10:15 a.m.
Mr. Rustmore - 11:15 a.m.
Island Gazebo 1 - 12:15 p.m.
Deck 4, Balcony - 7:30 p.m.

CAPTAIN HOOK & MR. SMEE
Gangway
2:00 p.m. & 3:00 p.m.

DAISY DUCK
Gangway
2:30 p.m. & 3:30 p.m.
SEA YA REAL SOON
Lobby Arrium
4:30 p.m. & 10:15 p.m.

DOPEY
Preludes - 5:45 p.m.

Don't forget your Camera to capture those magical moments!
For details of daily Disney character appearances, refer to the character line in your Navigator Grid.

YOUTH ACTIVITIES THEMED EXPERIENCES

- CLUBHOUSE SERIES** focuses on movement and features content which appeals to younger children.
- STORYBOOK SERIES** is designed with a strong connection to the Disney classic stories.
- JUMP UPI SERIES** includes large ground games & movement-oriented activities.
- CREATE & INVENT SERIES** will have a tactile focus allowing children to create and admire their work.
- SOLVE IT! SERIES** are less active, but will challenge children with problems/solutions-based activities.
- YOUTH ACTIVITIES OPEN HOUSE** A non-secured program with activities for families, adults and children of all ages to enjoy together.

SHIP DIRECTORY

YOUTH ACTIVITIES	
DISNEY'S OCEANEER CLUB	Deck 5, Mid 4:30 PM - 12:00 MID
DISNEY'S OCEANEER LAB	Deck 5, Mid 4:00 PM - 12:00 MID
EDGE	Deck 13, Mid 4:30 PM - 12:00 MID
VIBE	Deck 4, Fwd 4:30 PM - 1:00 AM
IT'S A SMALL WORLD NURSERY	Deck 5, Mid 9:00 AM - 11:00 PM
RECREATION	
AQUADUCK	Deck 12, Mid 1:00 PM - 10:00 PM
AQUALAB	Deck 12, Aft 1:00 PM - 7:00 PM
DONALD'S POOL	Deck 11, Mid 6:00 AM - 9:30 PM
GOLF/SPORTS SIMULATORS	Deck 13, Aft 1:00 PM - 6:00 PM
GOOFY GOLF	Deck 13, Aft 8:00 AM - 10:00 PM
GOOFY'S SPORTS DECK	Deck 13, Aft 8:00 AM - 6:00 PM
MARGE'S BARGES	CASTAWAY CAY 9:00 AM - 3:30 PM
MICKEY'S POOL	Deck 11, Mid 6:00 AM - 9:30 PM
MICKEY'S SLIDE	Deck 11, Mid 10:00 AM - 6:00 PM
MIDSHIP DETECTIVE AGENCY	Deck 2 & 5, Mid 9:00 AM - 10:00 PM
NEMO'S REEF	Deck 11, Mid 10:00 AM - 6:00 PM
PORT ADVENTURES DESK	Deck 5, Mid 6:00 AM - 9:30 PM
QUIET COVE POOL	Deck 11, Fwd 6:00 AM - 9:30 PM
SATELLITE FALLS	Deck 13, Fwd 6:00 AM - 6:00 PM
SENSES FITNESS CENTER	Deck 11, Fwd 6:30 AM - 10:00 PM
GENERAL INFORMATION	
ARR-CADE	Deck 11, Aft 24 HOURS
ADVENTURES BY DISNEY	Deck 4, Mid 9:00 AM - 10:00 AM 3:00 PM - 6:00 PM
DISNEY VACATION CLUB	Deck 4, Mid 6:00 PM - 10:00 PM
FUTURE CRUISE SALES DESK	Deck 4, Mid 9:00 AM - 10:00 AM 4:00 PM - 6:00 PM 7:30 PM - 10:00 PM
GUEST SERVICES	Deck 3, Mid 24 HOURS
MEDICAL HEALTH CENTER	Deck 1, Fwd 9:30 AM - 11:00 AM 4:30 PM - 7:00 PM
PORT & SHOPPING DESK	Deck 4, Mid 5:45 PM - 6:30 PM 8:00 PM - 8:45 PM
PRELUDES	Deck 3, Fwd 8:00 AM - 10:00 PM 3:30 PM - 11:30 PM
SENSES SPA AND SALON	Deck 11, Fwd 9:00 AM - 10:00 PM
SHUTTERS PHOTO GALLERY	Deck 4, Mid 3:30 PM - 11:30 PM
SHUTTERS DIGITAL	Deck 4, Mid 12:00 MID - 11:30 PM
SHOPPING	
BIBBIDI BOBBIDI BOUTIQUE	Deck 5, Mid 9:00 AM - 9:00 PM
MICKEY'S MAINSAIL	Deck 3, Fwd 5:30 PM - 11:00 PM
QUACKS	Deck 11, Mid 5:30 PM - 11:00 PM
SEA TREASURES	Deck 3, Fwd 6:00 PM - 10:00 PM
VISTA GALLERY	Deck 4, Mid 6:00 PM - 11:00 PM
WHITE CAPS	Deck 3, Fwd 5:30 PM - 11:00 PM
WHIZBITS & WHATZITS	Deck 11, Mid 5:30 PM - 11:00 PM

DINNER Animator's Palate Sea Ya Real Soon
Established Grades Sea Ya Real Soon
Royal Court Sea Ya Real Soon
Dining Times: 5:45 p.m. & 8:15 p.m.
(Near Alcoholity)

DRINK Singaway
OF THE DAY
Pumpkin Sang
(Near Alcoholity)

WEATHER FORECAST
Friday: Partly Cloudy
High: 73°F / 23°C
Saturday: Partly Cloudy
High: 68°F / 20°C

Evening Attire: Cruise Casual

DINING & LOUNGES

BRACKET

CABANAS CONTINENTAL	Deck 11, Aft 7:00 AM - 7:30 AM
CABANAS	Deck 11, Aft 7:30 AM - 10:45 AM
ENCHANTED GARDEN	Deck 2, Mid 8:30 AM - 10:30 AM
ROYAL COURT	Deck 3, Mid 8:00 AM - 9:30 AM

LUNCH

CABANAS	Deck 11, Aft 12:00 PM - 1:30 PM
COOKIES	CASTAWAY CAY 11:30 AM - 2:00 PM
COOKIES TOO	CASTAWAY CAY 11:30 AM - 2:00 PM
FILLMORE'S FAVORITES	Deck 11, Mid 12:00 PM - 6:00 PM
LUIGI'S PIZZA	Deck 11, Mid 12:00 PM - 6:00 PM
TOW MASTER'S GRILL	Deck 11, Mid 12:00 PM - 10:00 PM

DINNER

ANIMATOR'S PALATE	Deck 3, Aft 5:45 PM & 8:15 PM
ENCHANTED GARDEN	Deck 2, Mid 5:45 PM & 8:15 PM
ROYAL COURT	Deck 3, Mid 5:45 PM & 8:15 PM
PAID (18+)	Reservations Req. & Now Res Available Deck 12, Aft 6:00 PM - 8:30 PM
REMY (18+)	Reservations Req. & Now Res Available Deck 12, Aft 6:00 PM - 8:30 PM

LATE NIGHT SNACKS

LA PIAZZA (18+)	Deck 4, Aft 10:45 PM - 11:45 PM
LUIGI'S PIZZA	Deck 11, Mid 9:30 PM - 12:00 MID

ADDED FEATURES

BEVERAGE STATION	Deck 11, Mid 24 HOURS
EYE SCREAM	Deck 11, Mid 11:00 AM - 11:00 PM
ROOM SERVICE	DIAL O CLOSSES AT 1:30 AM

ENTERTAINMENT - LOUNGES - BARI

Adults must be 21 and older to consume alcoholic beverages.

BON VOYAGE	Deck 3, Mid 4:00 PM - 11:00 PM
COVE BAR (18+)	Deck 11, Fwd 11:30 AM - 10:30 PM
COVE CAFE (18+)	Deck 11, Fwd 7:00 AM - 12:00 MID
CURRENTS (18+)	Deck 13, Fwd 12:00 PM - 11:00 PM
D LOUNGE	Deck 4, Mid SHOWTIMES
FROZONE TREATS	Deck 11, Mid 10:00 AM - 10:00 PM
LA PIAZZA	Deck 4, Aft 4:00 PM - 12:00 MID
MERIDIAN (18+)	Deck 12, Aft 5:00 PM - 12:00 MID
O'GILLS PUB	Deck 4, Aft 4:00 PM - 12:00 MID
OOH LA LA (18+)	Deck 4, Aft 5:00 PM - 12:00 MID
OUTLOOK	Deck 14, Mid SUNSET TIMES
SKYLINE (18+)	Deck 4, Aft 5:00 PM - 12:00 MID
THE TUBE (18+)	Deck 4, Aft 10:00 PM - 1:00 AM
VISTA CAFE	Deck 4, Mid 7:30 AM - 11:00 PM
WAVES	Deck 12, Aft 2:30 PM - 6:00 PM

CASTAWAY CAY BARI

CONCHED OUT BAR	CASTAWAY CAY 9:00 AM - 4:00 PM
CASTAWAY AIR BAR	CASTAWAY CAY 9:00 AM - 3:30 PM
HEADS UP BAR	CASTAWAY CAY 9:00 AM - 3:30 PM
SAND BAR	CASTAWAY CAY 9:00 AM - 4:00 PM

Consumers who order raw or partially cooked, ready-to-eat food of animal origin, are hereby informed that the food is not sufficiently cooked to ensure its safety.

IMPORTANT NUMBERS

Fire/Security: 7-3001
Medical EMERGENCY: 7-3000
Health Center: 7-1923

All Ashore:
Approx. 9:45 a.m.

All Aboard:
4:30 p.m.